

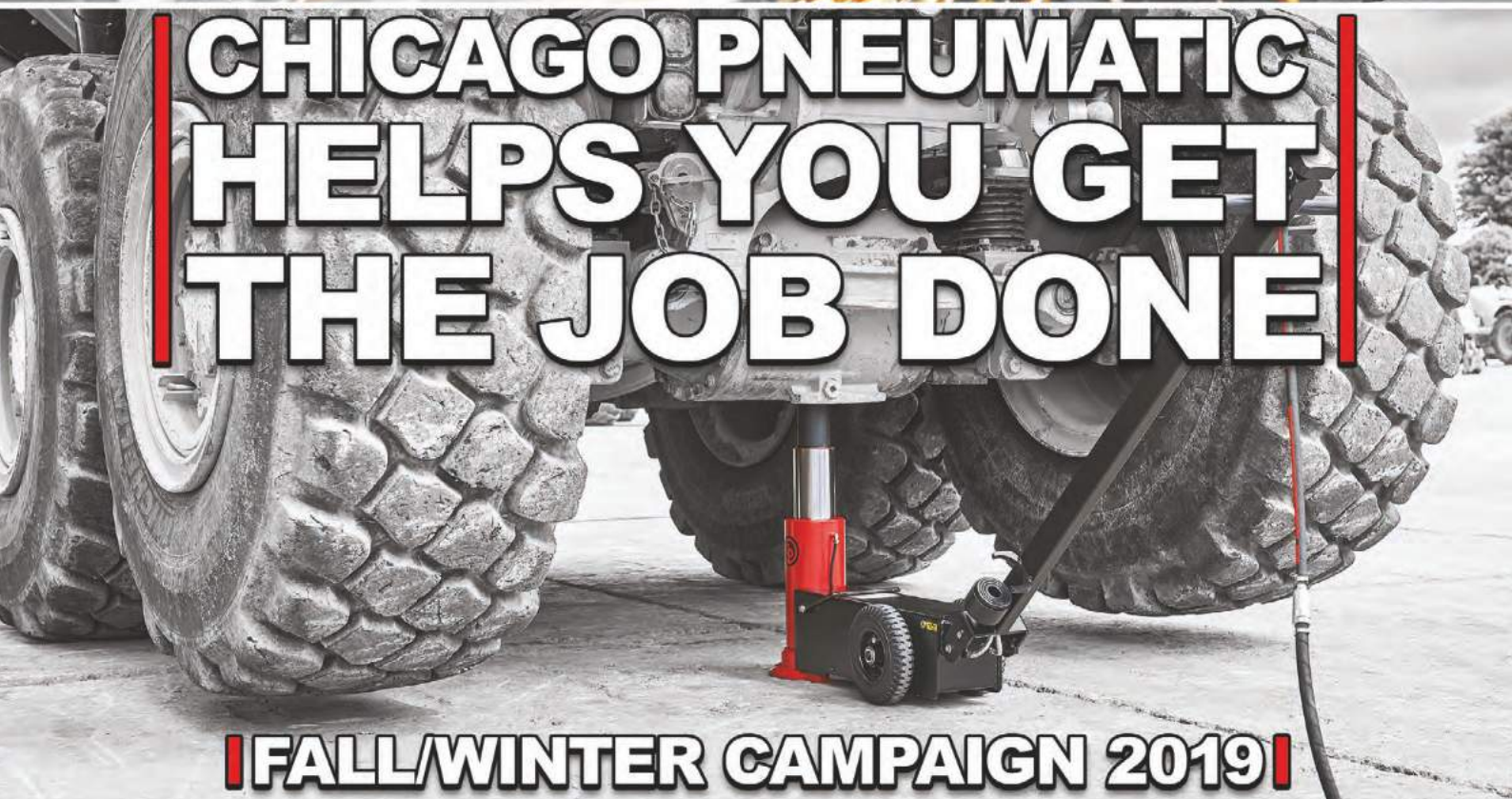
# Chicago Pneumatic

Fall / Winter Campaign 2019

**MURENS MASKINSERVICE**  
Din kompressor & tryckluftsspecialist  
0155-60 60 60 • 08-53 33 07 07  
[www.murensmaskinservice.se](http://www.murensmaskinservice.se)



**CHICAGO PNEUMATIC  
HELPS YOU GET  
THE JOB DONE**



**FALL/WINTER CAMPAIGN 2019**



People.  
Passion.  
Performance.



**Chicago  
Pneumatic**



# INDUSTRIAL TIRE CHANGE

**The first cordless 1/2" Impact Wrench with 2 shut off positions in forward. 1150+ Nm Power in reverse**

**New!**



- 4 settings in forward, to be set up with the touch pad on the backside of the tool
- - Slow mode to approach without impacting (hand tightening around 4-5 Nm)
- - Fast mode to tighten wheels close to recommended torque without overtightening (around 70 Nm)
- 50%: around 580 N
- 100% of maximum torque around 1150+ Nm
- 1 setting @ full power in reverse 1150+ Nm



CP8849  
8941088490  
CP8849-2  
8941088494

**5900 ₺**

**Most powerful 1/2" tool on the market in its class**

**New!**

**Torque Limited in forward and Extreme torque in reverse**



- 1/2" composite impact wrench
- One handed forward/reverse
- Full power in reverse: **1300 Nm** maximum real torque in reverse
- 3 positions in forward: Low - 245 Nm - Medium - 650 Nm - High 990 Nm

CP7748  
8941077481  
CP7748-2  
8941077486

**1700 ₺**



- 1/2" composite impact wrench
- One handed forward/reverse
- 2 setting positions : one in Reverse and one Torque Limited in forward
- **90/100 Nm** in torque limited position in forward
- **1,250 Nm** of maximum torque in reverse

CP7748TL  
8941077484  
CP7748TL-2  
8941077485

**1700 ₺**

**Great Performance and Durability**

**Powerful & lightweight 1/2" Impact Wrench**



- **900 Nm** max in reverse
- Twin hammer mechanism and steel motor
- Well balanced minimizing wrist strain
- Ergonomic handle fits perfectly in the hand
- Suited for all maintenance applications

CP7736  
8941077360

**1400 ₺**



- **1300 Nm** maximum real torque in reverse
- Weight: 1.8 kg
- Length: 171 mm length
- Aluminum alloy front housing
- Composite housing
- 2 positions in reverse: max and lower torque
- 2 position in forward: max and low torque

CP7749  
8941077491  
CP7749-2  
8941077493

**1900 ₺**

## ■ Lightweight electric polisher with great precision

■ Precise control and flexibility ■ Smooth operation ■ Operator comfort



CP8210E  
8941082105

- 6" (150 mm) electric polisher
- Compact and lightweight tool
- Electronic power regulator
- Unique and durable gearing for high spindle torque
- Multi-position side handle
- 4 m heavy duty cable
- Free Speed: 500-2500 RPM
- Net weight: 2.1 kg
- Power: 1.2 kW

**3600 ₺**

## ■ Powerful & efficient for a wide variety of applications



CP7550-A  
8941075503

- M14 spindle thread
- High quality bevel gears & Governed motor
- Robust steel keyless adjustable wheel rotative guard
- **1.1HP - 840 W**
- **1000 hour service interval**
- Streamline CP Safety Lever
- Free speed: 12 000 rpm
- Length: 270 mm

**2750 ₺**

## ■ Ultra compact 1/2" wrench, easy to use and durable



CP7732C  
8941077321

- **625 Nm Max. torque**
- Steel front cover & Aluminum body
- One hand operation forward – reverse by either left or right handed users
- 3 setting positions
- Only 4.4" long
- Jumbo hammer

**1500 ₺**

## ■ Workshop torque wrenches with long lasting accuracy and durability



- Accuracy: 4% according to EN ISO 6789:2003 specifications
- **Long-lasting accuracy up to 25000 cycles**
- Durable: Reliability of the mechanism up to 25000 cycles
- Robust: 54 teeth fixed pear head ratchet with quick socket release
- Comfort: Black aluminum handle resistant to common chemicals in workshops
- Compact: To work in restricted areas
- Fine scale graduation
- Sensitive & sound signals when reaches the torque
- Provided with ISO 6789 calibration certificate
- Provided in a protective blow molded case

Model	Part number	Square drive	Capacity	Length	Weight	Price
CP8905	8941089050	1/4"	5-25 Nm	245 mm	1,28 Kg	<b>1600 ₺</b>
CP8910	8941089100	3/8"	20-100 Nm	410 mm	1,50 Kg	<b>1600 ₺</b>
CP8915	8941089150	1/2"	40-200 Nm	520 mm	2,02 Kg	<b>1600 ₺</b>
CP8917	8941089170	1/2"	60-340 Nm	610 mm	1,76 Kg	<b>1800 ₺</b>





# HEAVY TRUCK GARAGE

**Ultra compact and lightweight, perfect for work in small spaces**



- 1/4" quick change bit holder
- Max. torque: 115 Nm in reverse
- 1.1 kg
- 161 mm length
- 12-Volt CP12XP Lithium-ion
- 1.5Ah battery
- Also fits our stud cleaners

CP8818  
8941088180

**2400 ₺**

**Clean your dirty and rusted studs with CP2755**

## STUDCLEANERS

8940168858 M20x37L  
8940169793 M22x37L  
8940169794 M24x37L  
8940169927 M20x60L  
8940169928 M22x60L  
8940169929 M24x60L  
8940169795 M30x60L

400 ₺  
400 ₺  
400 ₺  
400 ₺  
400 ₺  
400 ₺  
400 ₺



CP2755  
6151922755 **1800 ₺**

**The unrivaled 3/4" Impact wrench.**



- Socket retainer ring combined with hole retainer
- All controls within reach
- Variable speed trigger
- One-hand power adjustment
- One-hand reverse system
- 1950 Nm of maximum torque

CP7769  
8941077691  
CP7769-6  
8941077697

**4900 ₺**

**Lightweight, Powerful, Easy to use 3/4" Impact Wrench**



- Weight: 6.5 kg / 7.3 Kg
- Powerful: 1760 Nm in reverse
- Twin hammer mechanism
- Steel motor
- Intuitive Forward / Reverse lever & power regulator on both sides
- 4 position power settings on both sides
- Side handle with soft touch grip

CP7763D  
8941077631  
CP7763D-6  
8941077637

**5400 ₺**

**1" D-handle Impact wrench with dual retainer**



- Integrated protective cover on the clutch housing
- Full teasing trigger
- Regulator with integrated forward/reverse with 3-position power settings in both directions
- Maximum Torque: 2600 Nm

CP7782  
8941077820  
CP7782-6  
8941077826

**6600 ₺**

**Powerful and SUPER Durable 1" Impact Wrench**



- 2400 Nm max torque in reverse for high productivity
- Pinless closed reinforced rocking dog mechanism
- Features an adjustable top or down exhaust
- Regulator integrated in forward/reverse button with 3 power settings in both directions

CP7783  
8941077830  
CP7783-6  
8941077836

**7900 ₺**

**Easy-to-use single wheel dolly**



- Adjustable arms
- Sturdy & handy assembly aid for various types of wheels
- Stop rollers on the rear side that avoid pushing the wheel onto the frame
- Ergonomic handle with rounded & soft safety grip
- Capacity: 250 Kg

**2200 ₺**  
CP84010  
8941084010

**Great ergonomic seat with the best price/quality ratio**



- Strong steel tube
- 360° front wheels
- Can be used between 2 buses
- Equipped with balancer
- Equipped with industrial FRL
- Disc seat for multi-position sitting

**15000 ₺**  
CP87029  
8941087029

**Robust and Fast Lifting Wheel Dolly**



- Adjustable and sliding arms to wheel diameter from 545 to 1280 mm
- 2 ball bearing rollers for twin wheel trucks
- Chain attachment for safe balance during removal and transport
- Sturdy metal frame
- Capacity: 700 kg

**12000 ₺**  
CP87700  
8941087700

Chicago Pneumatic's BlueTork CP7600 nutrunner series is a reliable and ergonomically designed tool, when used in a comprehensive wheel preparation process that offers a unique torque control solution. The BlueTork nutrunner can tighten wheel nuts to a precise specification without using impact force. It is the only non-impact tool with a shut-off nutrunner available on the market for fleet maintenance applications.

The BlueTork nutrunner provides high user-comfort when handled, and can reduce maintenance issues. Since the tool uses continuous driving force, instead of impact force, it is quiet at 79dBA, with vibration of less than 2.5m/s.

The BlueTork nutrunner enables operators easily to re-set torque for each use, providing accurate, precise tightening to the original equipment manufacturer's guidelines. The shut off valve controls the tightening process, while the torque reaction is taken by a reaction bar. The tool uses a dual motor setup which provides initial run-down at 100 rpm (50 ft.lbs) to quickly snug the nut, while the second motor rotates at 8 rpm to deliver the final specified torque.

The BlueTork nutrunner is available in four versions (of 7 models) for maximum user choice: the CP7600 with one torque setting in forward only; the CP7600R with one torque setting with forward and reverse; the CP7600-4P which features four torque settings in forward only; and, the CP7600R-4P, featuring four torque settings with forward and reverse. Some versions can also be specified with an extended gearbox to reach deeper bolts. In addition to easy handling, the CP7600 series features a simple swing bar reaction mechanism for easy alignment and quick operation.



- 900 Nm maximum real torque in reverse
- Weight: 6-9.1 Kg
- Air shut off at preset torque
- Ideal for Truck and Bus lug nuts
- Almost no vibrations
- Two motors for fast rundown

CP7600xB  
8941076010

CP7600xB-R  
8941076011

CP7600xB-R4P  
8941076015

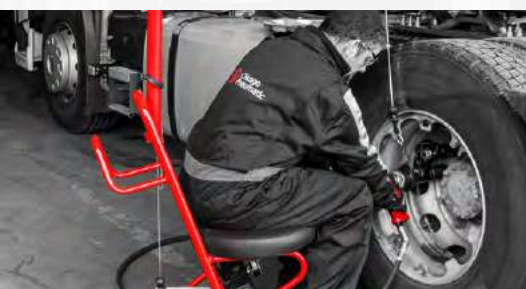
CP7600xC  
8941076021

CP7600xC-R4P  
8941076025

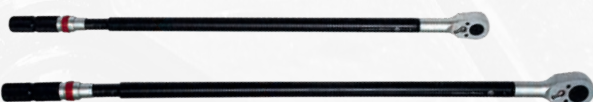
CP7600C-R  
8941076031

CP7600C-R4P  
8941076021

**Interested in our Bluetork line of tools? Ask us for a quote!**



### Workshop torque wrenches with long lasting accuracy and durability



- Accuracy: 4% according to EN ISO 6789:2003 specifications
- Long-lasting accuracy up to 25000 cycles
- Durable: Reliability of the mechanism up to 25000 cycles
- Robust: 54 teeth fixed pear head ratchet with quick socket release
- Comfort: Black aluminum handle resistant to common chemicals in workshops
- Compact: To work in restricted areas
- Fine scale graduation
- Sensitive & sound signals when reaches the torque

Model	Part number	Square drive	Capacity	Length	Weight	Price
CP8920	8941089200	3/4"	200-1000 Nm	1060 mm	5,84 Kg	6000 €
CP8925	8941089250	1"	200-1000 Nm	1255 mm	6,84 Kg	7500 €



# INDUSTRIAL MRO



CP3340-SALAVET  
6151609270

**Best in class productivity and optimal operator safety with up to 1,000 hour maintenance intervals**

- Integrated Overspeed Shut-off device for improved safety
- Streamlined safety lever
- Robust aluminum housing
- 6" (150 mm) cup wheel capacity
- 4.5 hp (3,400 W) high power governed motor
- 6,000 rpm free speed



**8900 ₺**



CP3650-120AA5VK  
6151607180

**Superior torque for maximal productivity  
Industrial angle wheel grinder**

- Industrial grade durability with up to a 2,000 hour maintenance interval
- Low vibration sidehandle
- Autobalancer
- Wheel size: 125 mm
- Spindle thread: M14
- Free speed: 12 000 rpm
- Power: 1 800 W
- Weight: 1,9 kg



**10200 ₺**



CP3850-85AH7VE  
6151704930

**Highest durability in demanding applications with up to 2,000 hours maintenance intervals**

- Low profile angle head
- Double action safety lever
- Wheel size: 180 mm
- Spindle thread: HEX
- Free speed: 8 500 rpm
- Power: 2 100 W
- Weight: 2,7 kg



**12500 ₺**

## Check out our Dust Extraction units!

For more information go to [www.cp.com/nordic](http://www.cp.com/nordic)



# CP3550 Series

## INDUSTRIAL PERFORMANCE

This new range is ideally suited for contouring, deburring, cutting, finishing and weld cleaning of different materials such as cast iron, steel, stainless steel, aluminum and composite, magnesium and titanium.

Model	Part #	Free Speed	Power		Abrasive Capacity	Spindle Thread	Tool Weight	Sound Power	Air Inlet	Price
		RPM	hp	W	mm	in.	kg	dB(A)	in.	
Angle Grinders										
CP3550-120AA5	615 160 7780	12,000	1.5	1,100	125	M14	1.9	95	3/8	6100 ₺
CP3550-120AB5	615 160 7790	12,000	1.5	1,100	125	5/8-11	1.9	95	3/8	6100 ₺
Angle Sanders										
CP3550-085AB	615 162 0350	8,500	1.5	1,100	125	5/8-11 UNC "	1.5	93	3/8	6100 ₺
CP3550-120AA	615 162 0360	12,000	1.5	1,100	125	M14	1.5	95	3/8	6100 ₺
CP3550-120AB	615 162 0370	12,000	1.5	1,100	125	5/8-11	1.5	95	3/8	6100 ₺
Angle Die Grinder										
CP3550-120ACC*	615 160 4420	12,000	1.5	1,100	6.35	-	1.5	95	3/8	6100 ₺

\*Planned launch Q4 2019



### Easy handling - Large removal 20mm Belt sander



CP9780  
6151939780

- Quick-change belt replacement
- Sanding belt size: 20x 520 mm
- Free speed: 20 000 rpm
- Power: 380 W
- Length: 380 mm
- Weight: 1,5 Kg

2500 ₺

### Flexible 10mm belt sander



CP9779  
6151939779

- Excellent for paint removal, weld sanding, smoothing and rust removal in tight areas
- Sanding belt size: 10x 330 mm
- Free speed: 22 000 rpm
- Power: 260 W
- Weight: 0,90 Kg

1800 ₺



## CP3650-085AB INDUSTRIAL ANGLE SANDER

### High performance and ergonomics



- High power and torque motor
- Superior durability bevel gear
- Spindle lock button
- 7" (180 mm) pad capacity
- 2.4 hp (1,800 W) high performance governed motor
- 8,500 rpm free speed
- 5/8" 11 Spindle
- Extraction kits are available

CP3650-085AB  
6151620190

8900 ₺



# INDUSTRIAL IMPACTS

## Industrial performance and power

**The most productive 1-1/2" with unbeatable power and ergonomics**



**CP6120-D35H**  
6151590120

- Extremely comfortable handle and adjustable support handle
- Extremely low lateral vibrations for best comfort and safety
- Working torque range forward: 815-2710 Nm
- Maximum torque in reverse: **4880 Nm**
- Free Speed: 3500 rpm
- 960 blows/minute
- Length: 420 mm

**46000** ₪

**Powerful, Robust & Comfortable 1-1/2" Impact for Industrial Maintenance**

**New!**



**CP6930-D35**  
6151590390

- Durable twin hammer clutch with oil bath
- Robust aluminum body & clutch housing
- Reversible D-type side handle
- Maximum torque in reverse: **3900 Nm**
- Free Speed: 4300 rpm
- 850 blows/minute
- Length: 440 mm

**26000** ₪

**Compact, robust and powerful impact for industrial maintenance applications**

**CP6763** 3/4"  
6151590400

**CP6773** 1"  
6151590410



- Very powerful twin hammer clutch
- Working torque range forward: 350-1290 Nm
- Maximum torque in reverse: **1630 Nm**
- Free Speed: 6300 rpm
- 900 blows/minute
- Length: 222 mm
- Weight: 5,5 and 5,6 Kg

**4300** ₪

**The Super Industrial 1" with renewed design**



**CP0611-D28H**  
6151590160

- Operator comfort and control even at VERY high torque
- Progressive torque thanks to the 2-Jaw clutch
- Working torque range forward: 1220-2440 Nm
- Maximum torque in reverse: **3790 Nm**
- Free Speed: 3500 rpm
- 1020 blows / minute
- Length: 360 mm

**29950** ₪

**Premium composite ATEX and IP6 certified wrenches Superior durability - designed for intensive use!**

**ATEX  
CERTIFIED**



- 1/2" Square drive
- Maximum torque in reverse: **1085 Nm**
- Free Speed: 8400 rpm
- 1200 blows/minute
- Length: 200 mm

**CP6748EX**  
-P11R ATEX  
6151590570 **3100** ₪

**ATEX  
CERTIFIED**



- 3/4" Square drive
- High torque - up to **1750 Nm**
- Free Speed: 5100 rpm
- 1050 blows/minute
- Length: 250 mm

**CP6768EX**  
-P18D  
6151590580 **5800** ₪

**ATEX  
CERTIFIED**



- 1" Square drive
- High torque - up to **1750 Nm**
- Free Speed: 5100 rpm
- 1050 blows/minute
- Length: 250 mm

**CP6778EX**  
-P18D  
6151590590 **5800** ₪



# EXPERT CORNER

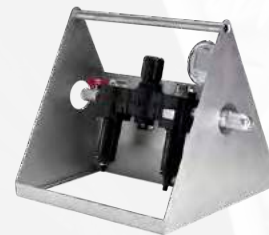
## CP6613/26/41 Series

### Robust, accurate and lightweight

- Replaceable protective cover
- Reliable Gearbox: 13,000 cycles before maintenance
- Vane type high performance air motor same as industrial impact wrench
- Capable of reaching high torque accuracy
- Different reaction arm types and shapes available
- Reduce operator fatigue and risks of vibration related injuries



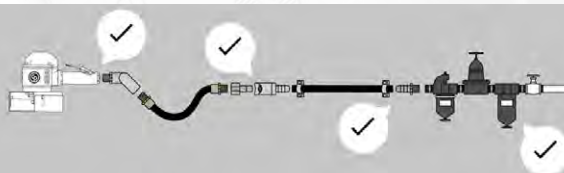
+ ATC PACK!



Model	Part #	Square drive	Maximum torque	Length	Weight
CP6613+ATC PACK	6151800120	3/4"	1300 Nm	212 mm	3,7 kg
CP6626+ATC PACK	6151800130	1"	2600 Nm	300 mm	5,7 kg
CP6641+ATC PACK	6151800140	1"	4100 Nm	361 mm	9,9 kg

Interested?

Ask us for a quote!



## How to set up your air line correctly

After all, pneumatic tools need air to work!

There are 3 simple steps to make sure your air line installation is providing the right pressure and that your accessories selection is correct, so you can ultimately work productively. It does not take long and it is something you can easily do yourself using our self-diagnostic checklist.

3 steps to check that your air line is set up correctly: it's as easy as 1, 2, 3...

Step 1: Calculate if there is an air pressure drop between the FRL and the tool.  
In air tool installations most of the pressure drops occur between the pipe-end and the tool.

- First, read the FRL gauge value
- Secondly, measure the dynamic pressure at the tool's inlet
- Then, calculate the difference between the two values to see if there is a drop in air pressure between the FRL and the tool



Step 2: Identify where pressure is being lost by checking that your accessories have been selected and installed properly.

There are various points to inspect, the main ones being: at the tool inlet, the couplings/nipples and hose connections, as well as the FRL.  
To avoid pressure drops you want to make sure that:

- Accessories have the correct diameters and thread sizes/types
- The hose is not longer than needed
- Clamps are properly tightened

Step 3: Final measurements and adjustments.  
When it comes to air pressure, higher is not always better!

Once you are confident that all accessories have been selected and installed correctly, measure once more the dynamic pressure at the tool's inlet.  
You can then adjust accordingly the FRL regulator to ensure you get a reading of 90 psi / 6.3 bars at the tool inlet.



## IS YOUR AIR TOOL INSTALLATION RIGHT?

Download our free technical guide at <https://campaigns.cp.com/is-your-air-tool-installation-right>

# DRILLS

## CP1114 Series OUR LATEST INDUSTRIAL DRILL SERIES

Powered by a 0.5HP (410W) motor, these reversible pistol drills are perfect for drilling, tapping and reaming in industrial production and maintenance applications. Available in 4 speeds: 500, 900, 2600, and 4000 RPM the CP1114R cover a large variety of applications, from aluminum to stainless steel.

The unique CP Ergo Wing design allows a comfortable and safe grip for operators while the three full caged planetary gears offer a high level of durability, with 800 hours service intervals. As a result a best in class run out (below 0.15mm) is achieved for high precision drilling and tapping.



Model	Part #	Free Speed	Power		Max Torque	Chuck Capacity	Spindle Size	Tool Weight	Sound Power	Air Inlet	Price
		RPM	hp	W							
CP1114R05	615 1580 310	500	0.5	410	25.2	13	3/8-24"	1.3	89	1/4"	3300 ₪
CP1114R09	615 1580 320	900	0.54	400	16.8	13	3/8-24"	1.8	89	1/4"	3300 ₪
CP1114R26	615 1580 330	2600	0.54	400	5.5	10	3/8-24"	1.3	93	1/4"	2500 ₪
CP1114R40	615 1580 340	4000	0.54	400	1.7	10	3/8-24"	1.3	93	1/4"	2500 ₪



### High Comfort & Lightweight



- Free Speed: 2800 rpm
- Power: 230 W
- Chuck Capacity: 6 mm
- Net weight: 0.67 kg
- Supplied with high quality industrial Jacobs® chucks for longer use

CP7300RC  
8941073011

1990 ₪

### Excellent Speed Control & Durability



- Free Speed: 2100 rpm
- Power: 360 W
- Chuck Capacity: 10 mm
- Net weight: 1.1 kg
- Supplied with high quality industrial Jacobs® chucks for longer use

CP9790C  
8941097900

1600 ₪

### High Comfort & Ergonomics



- Free Speed: 840 rpm
- Power: 350 W
- Chuck Capacity: 13 mm
- Net weight: 1.4 kg
- Supplied with high quality industrial Jacobs® chucks for longer use

CP9789C  
8941097890

2500 ₪



# CP1117 Series

## THE BEST POWER TO WEIGHT RATIO

Improve your productivity thanks to high power & speed  
Operator comfort thanks to exclusive ergonomic features  
Drills for Industrial Production designed for intensive duty and high durability



Choose between with chuck, without chuck or keyless

Model	With Chuck Part #	Without Chuck Part #	Keyless Part #	Free Speed	Power		Chuck Capacity mm	Spindle Size in.	Tool Weight kg	Sound Power dB(A)	Air Inlet in.	Price
				RPM	hp	W						
CP1117P05	615 1580 170	615 1580 240	615 1580 180	500	1	750	13	3/8-24 "	1.53	94	1/4"	3700 ₺
CP1117P09	615 1580 150	615 1580 230	615 1580 160	900	1	750	13	3/8-24 "	0.99	94	1/4"	3700 ₺
CP1117P26	615 1580 130	615 1580 220	615 1580 140	2600	1	750	13	3/8-24 "	0.99	94	1/4"	3700 ₺
CP1117P32	615 1580 110	615 1580 210	615 1580 120	3200	1	750	13	3/8-24 "	0.99	94	1/4"	3700 ₺
CP1117P60	615 1580 090	615 1580 200	615 1580 100	6000	1	750	13	3/8-24 "	0.99	94	1/4"	3700 ₺



## Looking for ATEX certified drills?

Both of our 1114 and 1117 range of drills carries ATEX certified versions.

Equipped with a unique chuck protection  
Full power, as performant as the standard versions  
Economically viable solution for tough applications in ATEX environments

**ATEX  
CERTIFIED**



**ATEX  
CERTIFIED**



**ATEX  
CERTIFIED**



Model	Part #	Chuck type	Free Speed	Power		Reversible	Chuck Capacity mm	Spindle Size in.	Tool Weight kg	Air Inlet in.	Price
			RPM	hp	W						
CP1114R05 ATEX	615 1580 380	Key	500	0.55	410	Yes	13	3/8-24 "	1.3	1/4"	5200 ₺
CP1114R26 ATEX	615 1580 390	Key	2600	0.55	410	Yes	10	3/8-24 "	1.3	1/4"	5200 ₺
CP1117P05 ATEX	615 1580 350	Key	500	1	750	No	13	3/8-24 "	0.99	1/4"	5200 ₺
CP1117P26 ATEX	615 1580 370	Key	2600	1	750	No	13	3/8-24 "	0.99	1/4"	5200 ₺
CP1117P32 ATEX	615 1580 360	Key	3200	1	750	No	13	3/8-24 "	0.99	1/4"	5200 ₺

## High quality yet affordable jack stands



### Features

- Feet with extra large plate
- Self locking handle & locking pin
- Ductile iron support column & rugged steel frame construction
- Ratchet action for height adjustment
- Sold in pairs

Model	Part #	Capacity	Max. Height	Min Height	Net Weight	Positions in height	Stroke	Price
		Kg	mm	mm	kg		mm	
CP82020	894 1082 020	2000	425	280	2.5	10	182	350 ₺
CP82030	894 1082 030	3000	455	300	3	11	182	420 ₺
CP82060	894 1082 060	6000	620	400	5	12	258	850 ₺

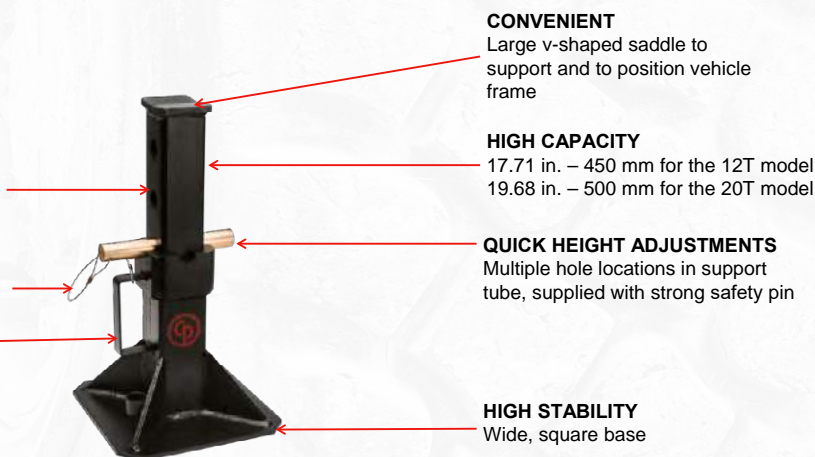
## High capacity, high quality and quick height adjustments

### HIGH QUALITY & STRENGTH

Welded steel construction to prevent distortion or twisting

### FUNCTIONAL

- Height adjustment pin is attached to stand to prevent loss
- Handle welded to base for easy adjustment and positioning



### CONVENIENT

Large v-shaped saddle to support and to position vehicle frame

### HIGH CAPACITY

17.71 in. - 450 mm for the 12T model  
19.68 in. - 500 mm for the 20T model

### QUICK HEIGHT ADJUSTMENTS

Multiple hole locations in support tube, supplied with strong safety pin

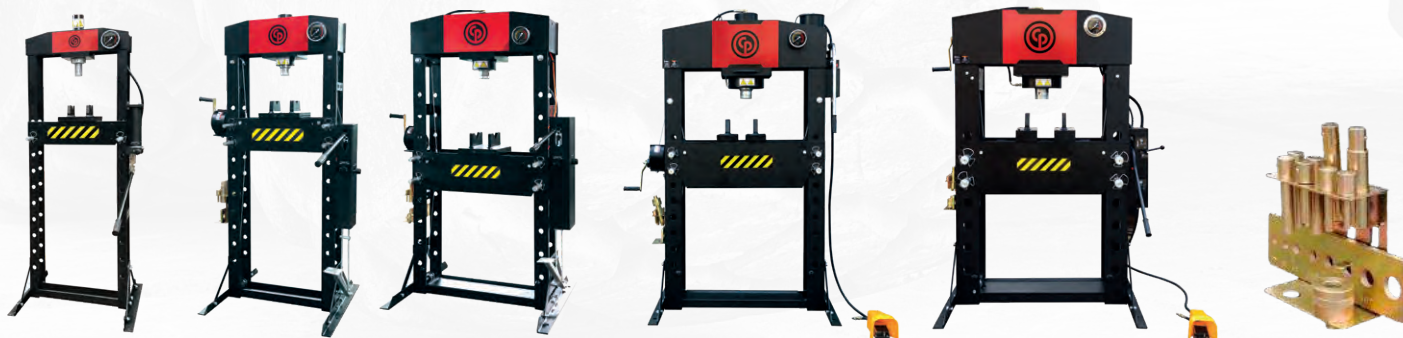
### HIGH STABILITY

Wide, square base

CP82120  
8941082120  
**2100 ₺**

CP82200  
8941082200  
**2400 ₺**

## High stability, durable and sturdy precision workshop presses



Model	Part #	Capacity	Min. Press Height	Max. Press Height	Price
CP86200	8941086200	20 t	185 mm	1175 mm	10500 ₺
CP86300	8941086300	30 t	151 mm	1031 mm	17000 ₺
CP86500	8941086500	50 t	68 mm	1048 mm	30500 ₺
CP86750	8941086750	75 t	170 mm	884 mm	39900 ₺
CP86100	8941086100	100 t	114 mm	814 mm	59900 ₺

### Features

- 2 holes in each foot to fix in the floor
- Steel frame
- 2 step stroke system
- Large gauge measuring short and metric tons
- Delivered with 2 V blocks
- Easy to use handle with rubber grip
- Delivered with a quick chuck and 8 punches



## High Capacity and Great Durability Air-hydraulic Jacks

■ Ideal for easily accessing lifting points on low chassis trucks

### Features

Air powered piston

**Includes 2 extensions** for higher lifting

- Stored on handle for transport

Piston and pump

**Anti dust seals for high durability**

Convenient joystick controls

Cylinder mounted carrying handle

1.3 m / long handle bar (1 piece handle) allows easy access to

controls when fully positioned under vehicle

Handle bar locks in 3 positions: 45°, 90° & 180°

Large & soft rubber wheels



Model	Part #	Max. Height	Lifting Capacity	Price
CP85030	8941085030	409 mm	30/15 t	11500 ₺
CP85031	8941085031	772 mm	30 t	21200 ₺
CP85050	8941085050	472 mm	50/25/15 t	17100 ₺
CP85080	8941085080	563 mm	80/50 t	24000 ₺
CP850100	8941085100	610 mm	100/60/33 t	28900 ₺

CHICAGO PNEUMATIC  
HELPS YOU GET  
THE JOB DONE

■ Easy-to-use single wheel dolly

Robust and durable  
**very low profile trolley jacks**



Model	Part #	Length	Lifting Capacity	Price
CP80015	8941081015	920 mm	1,5 t	2990 ₺
CP80020	8941181020	750 mm	2,0 t	2990 ₺
CP80030	8941181030	779 mm	3,0 t	3500 ₺



- Adjustable arms
- Sturdy & handy assembly aid for various types of wheels
- Stop rollers on the rear side that avoid pushing the wheel onto the frame
- Ergonomic handle with rounded & soft safety grip
- Capacity: 250 Kg

CP84010 **2200** ₺  
8941084010

# AIR FUSES

In a working environment, operator safety matters as much as productivity does. When a fitting comes loose from a pressurized hose or the hose is damaged (sometimes severed completely), the hose starts to blow an excessive amount of air in an uncontrolled way, causing whiplash. This can cause injury and damage to the work place and environment. A way to avoid this is to use an air fuse.



Fixed between the FRL and the hose, this small accessory will prevent from hose whiplash. It quickly shuts off the supply and resets automatically as soon as back pressure in the line downstream is restored.

## How to select your air fuse?

The air fuse should always be selected according to 3 values:

- Maximum tool air consumption (see catalog value),
- Hose diameter and length\*,
- Air line thread type

Tools max. air  
consumption  
@6.3 bars / 90 psi

Inside hose diameter / Hose maximum length

Air line thread type

Model	cfm	l/s	1/4" 5 mm	1/4" 6.5 mm	5/16" 8 mm	3/8" 10 mm	7/16" 11 mm	1/2" 13 mm	5/8" 16mm	3/4" 20 mm	BSP	NPT
AIR FUSE LOW FLOW 1/4	13	6	16.4 ft 5 m	49.2 ft 15 m	65.6 ft 20 m	-	-	-	-	-	6158112420	6158112450
AIR FUSE HIGH FLOW 1/4	21	10	-	16.4 ft 5 m	49.2 ft 15 m	-	-	-	-	-	110402	6158112460
AIR FUSE LOW FLOW 3/8	30	14	-	-	29.5 ft 9 m	49.2 ft 15 m	65.6 ft 20 m	65.6 ft 20 m	-	-	110422	6158112470
AIR FUSE HIGH FLOW 3/8	51	24	-	-	-	26.2 ft 8 m	49.2 ft 15 m	65.6 ft 20 m	-	-	110432	6158112480
AIR FUSE HIGH FLOW 1/2	74	35	-	-	-	-	-	49.2 ft 15 m	65.6 ft 20 m	-	110442	6158112490
AIR FUSE HIGH FLOW 3/4	127	60	-	-	-	-	-	-	49.2 ft 15 m	65.6 ft 20 m	6158112430	6158112500
AIR FUSE LOW FLOW 1	148	70	-	-	-	-	-	-	32.8 ft 10 m	65.6 ft 20 m	6158112440	110542

1/4" Fuses  
**400 ₺**

3/8" Fuses  
**500 ₺**

1/2" Fuses  
**610 ₺**

3/4" Fuses  
**750 ₺**

1" Fuses  
**1500 ₺**



GLOVE-MEDIUM  
8940171574  
.....  
GLOVE-LARGE  
8940158618  
.....  
GLOVE-X-LARGE  
8940158619  
.....  
GLOVE-XX-LARGE  
8940171573  
.....

**360 ₺**

## DON'T FORGET!

Remember to lubricate your air tools!



Grease Gun  
C098689 **219 ₺**



Air Tool Oil - 120 ml  
CA149661 **45 ₺**



# ALL-PURPOSE HOSE REELS WITH GREAT DURABILITY



HR8108 & HR8208



HR 8110 & HR 8210



HR 8113



HR 9110 & HR 9113

Model	Part number	Hose material	Hose reel material	Inner diameter	Length	Net weight	Outer diameter	Price
BSP HR8108	8940171991	Polyurethane	Composite	8 mm	10 m	4 kg	12 mm	<b>1700 ₺</b>
BSP HR8110	8940171993	KPU	Composite	10 mm	16 m	7,6 kg	14 mm	<b>2500 ₺</b>
BSP HR8113	8940171999	KPU	Composite	13 mm	16 m	10,7 kg	17 mm	<b>3600 ₺</b>
BSP HR8208	8940171995	KPU	Aluminum	8 mm	10 m	5,2 kg	12 mm	<b>2200 ₺</b>
BSP HR8210	8940171997	KPU	Aluminum	10 mm	16 m	9,2 kg	14 mm	<b>3000 ₺</b>
BSP HR9110	8940172001	KPU	Composite	10 mm	20 m	13,2 kg	14 mm	<b>4600 ₺</b>
BSP HR9913	8940172003	KPU	Composite	13 mm	15 m	13,8 kg	17 mm	<b>4900 ₺</b>

## High quality hose whips

Model	Part number	Hose diameter (in)	Thread size	Hose length	Price
BSP 1/4"	6158111920	3/8"	1/4"	0,6 m	<b>250 ₺</b>
BSP 1/2"	6158111930	1/2"	1/2"	0,6 m	<b>250 ₺</b>



## CP Air Flex makes rigid hoses flexible and multi-directional.



Less effort due to hose rigidity, makes work easier in hard to reach areas  
No more premature hose wear  
**No twisting, the hose remains in the ideal working position and lower the risk of tendinitis**

Model	Part number	Recommended max. air flow	Price
1/4"	8940171568	12 l/s	<b>650 ₺</b>
3/8"	8940171570	35 l/s	<b>800 ₺</b>
1/2"	8940171566	35 l/s	<b>800 ₺</b>

## High quality blowguns, standard, extended and silenced



Model	Part number	Price
Blow gun standard	6158112690	<b>140 ₺</b>
Blow gun standard with silencer	6158112700	<b>150 ₺</b>
Blow gun extended	6158112710	<b>150 ₺</b>
Blow gun extended with silencer	6158112720	<b>190 ₺</b>



Since 1901 the Chicago Pneumatic name has represented reliability and attention to customer needs, with construction, maintenance and production tools and compressors designed for specific industrial applications. Today, Chicago Pneumatic has a global reach, with local distributors around the world.

Our people start every single day with a passion to research, develop, manufacture and deliver new products that are meant to meet your needs not only today, but tomorrow as well. To learn more, visit [www.cp.com](http://www.cp.com).

# ■ CHASING THE CHAMPIONSHIP

**Chicago Pneumatic is proud to sponsor Indy Pro Series 2000 Racer Rasmus Lindh.**

This May Rasmus Lindh took a big step towards the championship in Indy Pro Series 2000 with a big win at Indiana Motor Speedway.

In one of the greatest racing weekends of his life Rasmus Lindh swept the Friday and Saturday races in the Indy 2000 Pro presented by Cooper Tires series during the INDYCAR Grand Prix. After winning both pole positions and races on the weekend Rasmus celebrated his clean sweep with a trophy raised above his head.

Rasmus entered the American racing scene last year and had already collected an impressive amount of wins in Europe with two National Championships, a first place in the WSK Series in Mini 60 and a fifth place finish in the World OK Senior Championship.


In 2018, the 17 year old made the move to North America and his first season of open-wheel racing. In his debut USF2000 season, the youngster went on to score three pole positions and five podiums en route to second place in the championship.

**Chicago Pneumatic congratulates Rasmus Lindh on his success and wish him a great future racing season.**



PC: Photos @ Indianapolis Motor Speedway, LLC Photography

## ■ FOLLOW RASMUS!

 [www.rasmuslindhrracing.com](http://www.rasmuslindhrracing.com)

 [rasmus\\_lindh](https://www.instagram.com/rasmus_lindh)

 [RasmusLindhRacing](https://www.facebook.com/RasmusLindhRacing)



**MURÉNS  
ASKINSERVICE**  
Din kompressor & tryckluftsspecialist

0155-60 60 60 • 08-53 33 07 07  
[www.murensmaskinservice.se](http://www.murensmaskinservice.se)

■ Chicago Pneumatic contact info: [order.seo@cp.com](mailto:order.seo@cp.com)

Use only authorized parts. Any damage or malfunction caused by the use of unauthorized parts is not covered by Warranty or Product Liability.